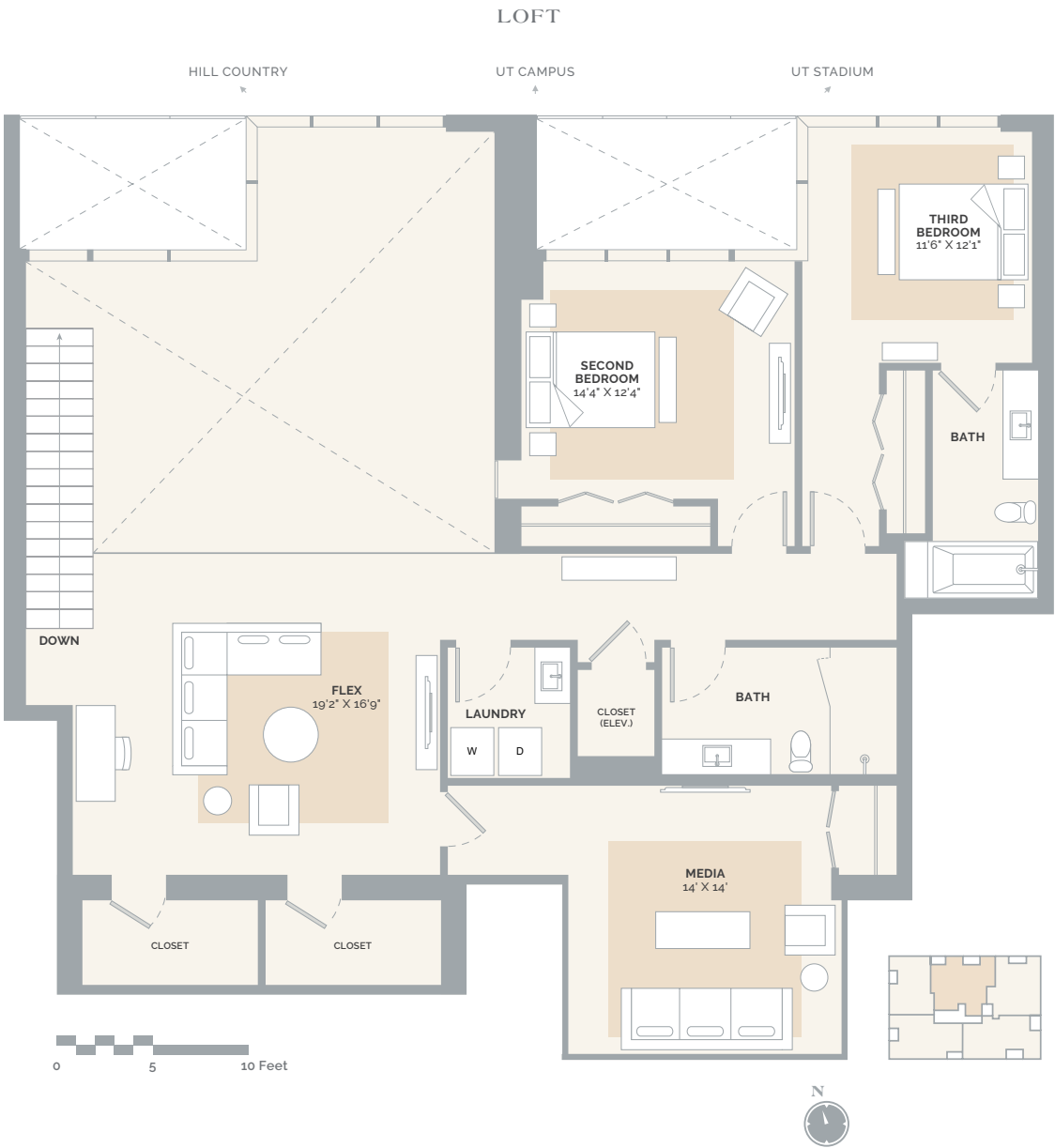
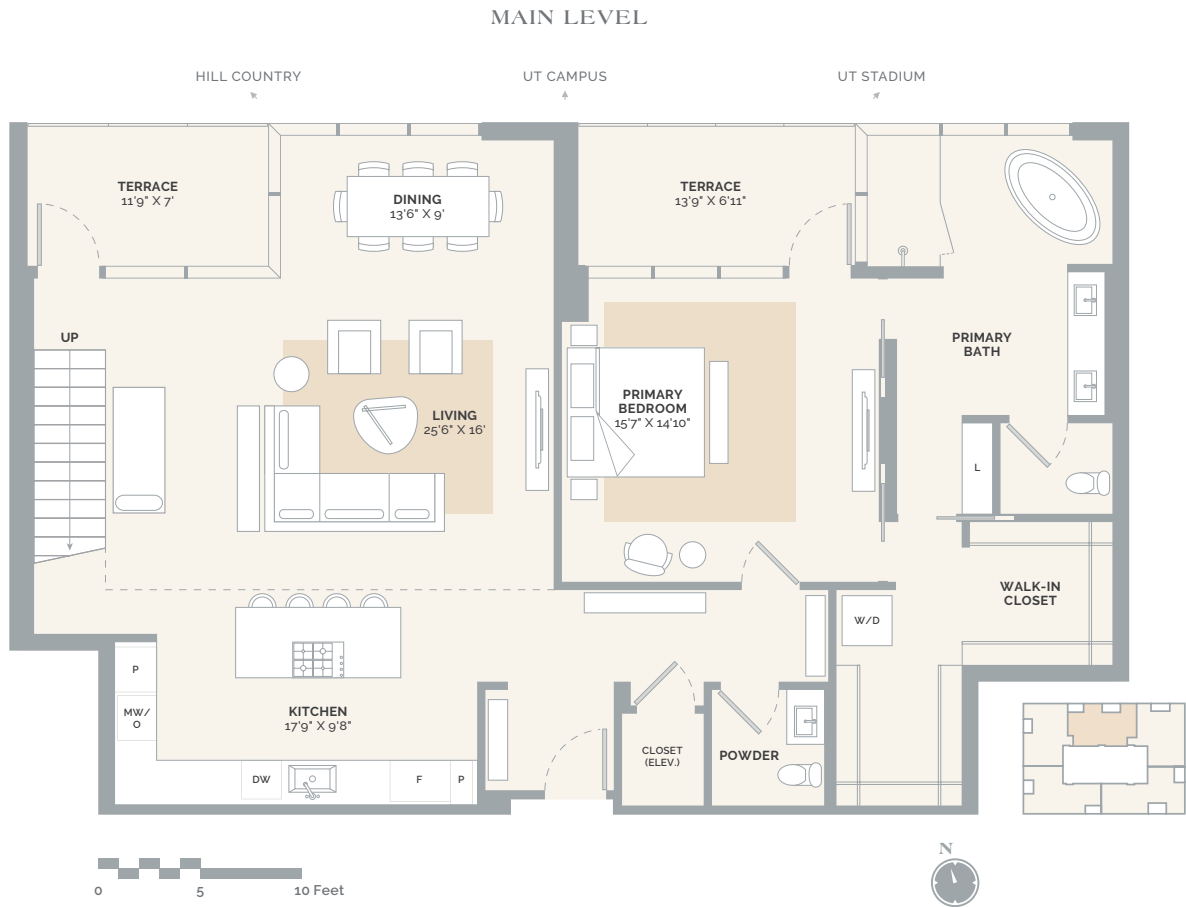




THE  
**LINDEN**  
RESIDENCES

Residence PH2

3 Bedrooms / 3.5 Bathrooms | Floor 27  
3,280 Total SF | 3,102 SF Interior | 178 SF Exterior



Exclusively Listed by



We are in compliance with Title VIII of the Civil Rights Act of 1968. We have not, and will not, either directly or indirectly, discriminate against you or any other prospective purchaser on the basis of race, color, religion, sex or national origin. This is not an offer to sell, or solicitation of offers to buy condominium units in states where such offer of solicitation cannot be made. Information provided by 1615 Guadalupe LLC through the marketing materials or marketing center is preliminary in nature; changes may be made to our project, including but not limited to the design, building height, floor plans, unit sizes, services, amenities, and pricing.

THELINDEN.COM